

# CD Series

NEW HIFI PRODUCTS 2014



**CANTON**  
German loudspeaker tradition

# Slender lines, versatile language of form, full spectrum of sound

Its sound performance is as mature and powerful as its appearance is slender and elegant. The modified cabinet geometry, new surface finishes and the revised structure of the front covers are the technical secret behind the new speakers of the CD series and the reason for the tonal finesse. You will be persuaded by the more finely tuned speaker technology underneath, based on aluminum membranes.



White "high gloss" lacquer  
White metal lattice



Silver anodized aluminum  
Silver metal lattice

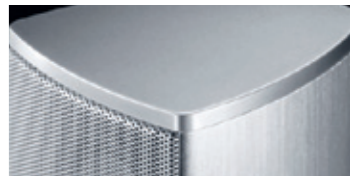


Black anodized aluminum  
Black metal lattice

- ▶ Aluminum tweeter system
- ▶ Cone systems with aluminum membranes
- ▶ Cabinet made of high quality aluminum
- ▶ Metal lattice as front cover
- ▶ Matching subwoofer: SUB 800 R, SUB 600
- ▶ Matching speaker base: LS 250.2 or LS 90.2



White "high gloss" lacquer  
White metal lattice



Silver anodized aluminum  
Silver metal lattice



Black anodized aluminum  
Black metal lattice

## The new CD 200 Series

## The new CD 100 Series



### CD 250.3

- Engineering principle — 2-way, closed
- Power handling (nom./music) — 70/130 watts
- Efficiency — 87 dB
- Frequency response — 45...30,000 Hz
- Dimensions W x H x D — 43 x 14 x 10 cm  
16.9" x 5.5" x 3.9"
- Weight — 3.5 kg
- Optional accessory — LS 250.2
- Special feature — Polymer protection,  
Wall brackets

### CD 150.2

- Engineering principle — 2-way, closed
- Power handling (nom./music) — 50/100 watts
- Efficiency — 86.5 dB
- Frequency response — 60...25,000 Hz
- Dimensions W x H x D — 36 x 9 x 10 cm  
14.2" x 3.5" x 3.9"
- Weight — 1.7 kg
- Special feature — Polymer protection,  
Wall brackets

### CD 290.3

- Engineering principle — 2-way, closed
- Power handling (nom./music) — 90/150 watts
- Efficiency — 87.5 dB
- Frequency response — 40...30,000 Hz
- Dimensions W x H x D — 14 x 105 x 10 cm  
5.5" x 41.3" x 3.9"
- Weight — 9.3 kg
- Special feature — Aluminum speaker base plate

### CD 220.3

- Engineering principle — 2-way, closed
- Power handling (nom./music) — 50/120 watts
- Efficiency — 86.5 dB
- Frequency response — 45...30,000 Hz
- Dimensions W x H x D — 14 x 21.5 x 10 cm  
5.5" x 8.5" x 3.9"
- Weight — 2 kg
- Optional accessory — LS 250.2
- Special feature — Polymer protection,  
Wall brackets

### SUB 600

- Engineering principle — closed
- Output (nom./music) — 200/250 watts
- Frequency response — 30...200 Hz
- Dimensions W x H x D — 27 x 33.3 x 29.5 cm  
10.6" x 13.1" x 11.6"
- Weight — 9 kg
- Special feature — High level input,  
Low level input,  
Automatic on/off switch

### CD 190.2

- Engineering principle — 2-way, closed
- Power handling (nom./music) — 70/120 watts
- Efficiency — 86.5 dB
- Frequency response — 50...25,000 Hz
- Dimensions W x H x D — 9 x 100 x 10 cm  
3.5" x 39.4" x 3.9"
- Weight — 4.7 kg
- Special feature — Aluminum speaker base plate

### CD 120.2

- Engineering principle — 2-way, closed
- Power handling (nom./music) — 45/100 watts
- Efficiency — 85 dB
- Frequency response — 80...25,000 Hz
- Dimensions W x H x D — 9 x 14 x 10 cm  
3.5" x 5.5" x 3.9"
- Optional accessory — LS 90.2
- Weight — 0.8 kg
- Special feature — Polymer protection,  
Wall brackets

### SUB 600

- Engineering principle — closed
- Output (nom./music) — 200/250 watts
- Frequency response — 30...200 Hz
- Dimensions W x H x D — 27 x 33.3 x 29.5 cm  
10.6" x 13.1" x 11.6"
- Weight — 9 kg
- Special feature — High level input,  
Low level input,  
Automatic on/off switch

# CD SERIES FEATURES

For movie fans: The speakers of the CD Series can be perfectly combined as elegant 5.1 Movie packages



## Movie 2050.2

- Dimensions (W x H x D)
  - Front: 14.5 x 105 x 10.5 cm  
5.7" x 41.3" x 4.1"
  - Center: 40 x 14.5 x 10.5 cm  
15.8" x 5.7" x 4.1"
  - Rear: 14.5 x 21.4 x 10.5 cm  
5.7" x 8.4" x 4.1"
  - Subwoofer: 27 x 33.3 x 29.5 cm  
10.6" x 13.1" x 11.6"



## Movie 1050.2

- Dimensions (W x H x D)
  - Front: 9 x 100 x 10 cm  
3.5" x 39.4" x 3.9"
  - Center: 22 x 9 x 10 cm  
8.7" x 3.5" x 3.9"
  - Rear: 9 x 13.8 x 10 cm  
3.5" x 5.4" x 3.9"
  - Subwoofer: 24 x 41 x 42 cm  
9.4" x 16.1" x 16.5"



## Movie 2005.2

- Dimensions (W x H x D)
  - Front & Rear: 14.5 x 21.4 x 10.5 cm  
5.7" x 8.4" x 4.1"
  - Center: 40 x 14.5 x 10.5 cm  
15.8" x 5.7" x 4.1"
  - Subwoofer: 27 x 33.3 x 29.5 cm  
10.6" x 13.1" x 11.4"



## Movie 1005.2

- Dimensions (W x H x D)
  - Front & Rear: 9 x 13.8 x 10 cm  
3.5" x 5.4" x 3.9"
  - Center: 22 x 9 x 10 cm  
8.7" x 3.5" x 3.9"
  - Subwoofer: 24 x 41 x 42 cm  
10.6" x 13.1" x 11.6"


May be subject to technical changes.  
Errors and omissions excepted.

CANTON Elektronik GmbH + Co. KG  
Neugasse 21-23  
61276 Weilrod, Germany

Tel.: +49 (0) 6083 287-0  
Fax: +49 (0) 6083 281-13

E-Mail: [info@canton.de](mailto:info@canton.de)  
Web: [www.canton.de](http://www.canton.de)

**CANTON**  
German loudspeaker tradition

Member of:  
 HIGH END SOCIETY

 Find us on  
**Facebook**  
[facebook.com/CantonLautsprecher](https://facebook.com/CantonLautsprecher)